



I-25: The New Pueblo Freeway



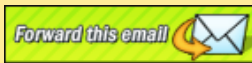
ILEX STREET TO CITY CENTER DRIVE

Colorado Department of Transportation

September 2018 eNewsletter

In This Issue

- [Ilex Team Takes Site Safety Seriously](#)
- [Back to School Means Extra Caution](#)
- [Project Photos](#)
- [Drones Provide More Than Pictures](#)
- [What Does CDOT Do? For More Information](#)



Please forward/share this email with others who may have an interest in the Ilex Design-Build project.

[For a PDF version, click here.](#)

Current Design Work

- Landscaping & irrigation plans complete
- ITS Design nearing completion

Current Construction

[CLICK HERE](#) to view Construction Update - August 2018

Project Schedule

Northbound I-25: Spring 2015 to Spring 2018

Southbound I-25: Fall 2017 to Winter 2018

Bridge Rehabilitations: Summer 2015 to Spring 2018

Final Configuration: December 2018

Project Completion: April 2019

Ilex Team Takes Site Safety Seriously

The I-25/Ilex Design-Build team takes safety very seriously, and provides multiple trainings and precautions to keep their workers safe.

Flatiron Constructors, the Ilex project management team, holds monthly safety meetings with all subcontractors on the first Monday of the month. Every other Monday, they hold their own team safety meeting and topics include safety precautions with concrete, rigging properly, tool and equipment safety. They provide a region safety stand down twice a year to go over statistics and safety concerns facing the construction industry as a whole. Finally, regular site safety inspections are performed by Flatiron's insurance carrier at regular intervals to ensure the project members are compliant.

Different team members need different safety certifications. All engineers, foremen, superintendents and management

are required to have current CPR and first aid training, 30-hour OSHA, Safety Trained Supervisor Certification and completion of Flatiron's internal training course: Leadership for Safety Excellence. All project foremen must complete a weekly safety inspection form and supervisors must complete a Safety Site Assessment Form each month.

The project team has a color system of hard hats so it is easily known what their job role is, and what safety level they have completed. The newest team members have green hard hats and have completed level 1&2 of safety training. After 90 days of employment, they perform safety level training 3 and are given a blue hard hat.

"One of the most challenging parts of safety is teaching workers to not be complacent, even if they have been in the industry for years," said Chris Mari, Flatiron Project Manager. "All employees have the right to stop work if they see a safety violation. We emphasize safety, quality and production, in that order, so every worker goes home safe."



Workers on I-25 bridge over Gruma Drive

Back to School Means Extra Caution

Stay Connected

Website:
[Colorado Info Project](#)

Email:
i25ilex@PublicInfoTeam.com

Hotline:
(719) 470-2270

Quick Links

[Project Website](#)
[CDOT Website](#)

Sign Up to Receive Enewsletters

To receive future Ilex Design-Build project eNewsletters and construction notices, send an email to i25ilex@PublicInfoTeam.com

What the Project Involves

The Ilex interchange is the first segment to be constructed as part of the New Pueblo Freeway.

The project consists of replacing bridges on I-25 between Ilex Street and City Center Drive in Pueblo. Work includes rehabilitation of bridges on northbound I-25 over Santa Fe Avenue (US 50C), I-25 over Indiana Avenue, on the Santa Fe Avenue (US 50C) bridge over the Arkansas River, and on Northern Avenue and Mesa Avenue over I-25.

Structurally deficient bridges on I-25 over Gruma Drive, the Union Pacific Railroad, and Ilex Street will also be removed and replaced.

Interchange ramps will be lengthened to provide safer transitions onto and off of the Interstate, especially the 1st Street ramp to southbound I-25. Roadway curves will be softened to improve visibility and provide a smoother ride for motorists.

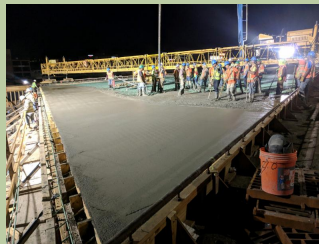
School is officially back in session, and after the summer break it may take drivers a bit of time to adjust to extra traffic. The I-25/Ilex Design-Build team reminds motorists to use caution driving around times when students are arriving at, or leaving school.

Tips for traveling in school zones:

- When driving in neighborhoods with school zones, watch for children traveling to school. They are unpredictable in their actions, and it is your responsibility to anticipate and prepare to react to what they may do.
- Drive slowly: Watch for children walking in the street, especially if there are no sidewalks in the neighborhood.
- Watch for children playing and gathering near school bus stops.
- Be alert. Children arriving late for the bus may dart into the street without looking for traffic.
- Learn and obey the school bus laws.
- Learn the flashing light system that school bus drivers use to alert motorists about stopping.
 - Yellow flashing lights mean the bus is preparing to stop and load or unload children. Motorists need to slow down and prepare to stop.
 - Red flashing lights and extended stop arm mean the bus has stopped and children are boarding or exiting the bus. Motorists must come to a complete stop a safe distance from the bus and wait until the red lights stop flashing, the arm is retracted, and the bus begins moving before they start driving again.

Failing to stop for a bus or speeding through a school zone can bring a hefty ticket, so know the rules of the road and always use caution while traveling.

Photos of the I-25/Ilex Project



Deck pour at the I-25 bridge over Gruma Drive



Piers being set at the I-25 bridge over Thomas Phelps Creek

Local roadway improvements are included at D Street, Ilex Street, Bennett Street cul-de-sac, Clark Street cul-de-sac, and along Santa Fe Avenue.

Bridges will be widened at City Center Drive and I-25 over Santa Fe Avenue (widened to the median).

Noise abatement will also occur along some segments of I-25.

Project Partners

- Colorado Department of Transportation
- Federal Highway Administration
- City of Pueblo
- Pueblo County
- The Community

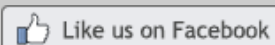
Funding

State of Colorado revenues from a safety fee placed on vehicle registrations have helped fund the Ilex Design-Build project.

Funding sources for the project:

Bridge Enterprise

RAMP (Responsible Acceleration of Maintenance and Partnerships)

 Like us on Facebook

 Follow us on **twitter**

Drones Provide More Than Pictures on the Ilex Project

The use of drones has become prevalent in the construction industry, and the I-25/Ilex Design-Build Project is no exception. Drones are effective because they are cheaper to fly than manned aircraft and are faster than human surveyors, collecting data far more frequently. This allows construction workers to track a site's progress with a degree of accuracy previously unknown in the industry. With the right computing tools, builders can turn sensor data into 3D structural models, topographical maps, and volumetric measurements (useful for monitoring stockpiles of costly resources like sand and gravel). Collectively, that intelligence allows construction teams to more efficiently deploy resources around a job site, minimize potential issues, trim costs, and limit delays.



CML Bridge - August 2018

One of the most obvious benefits of using drones in construction is increasing the accuracy of site mapping. Drones can provide incredible accuracy when mapping a project. While aerial imaging is

commonplace throughout the industry, the ease and mobility of drones provides an opportunity to create a detailed map of a project on short notice. Using 3D printing technology, a company could even create a physical model of the construction site, which could be a valuable service for property owners and contractors alike.

If you look ahead to the future, it is likely that the FAA will loosen regulations as drone technology improves. Deliveries over greater distances and heavier payloads will likely become available

One of the most interesting, and accordingly most distant, potential use of drones is to replace or assist cranes. Drones are not currently powerful enough to do the work that cranes do, but the potential is there. While it will be years before

drones can lift a useful amount of material, it is much more foreseeable that drones could assist cranes in the very near future. Drones are capable of nimble movement and could help when precision is imperative. With drone automation on the horizon, this might all be done without a manual operator.



Thomas Phelps Creek Bridge - August 2018

Watch the video below that shows a side-by-side comparison of the project from December 2017 to August 2018.



CDOT ILEX Project - Now and Then December 2017 to August 2018

What Does CDOT Do?

The Colorado Department of Transportation (CDOT) is an organization most people are aware of, but many don't understand exactly what they do. CDOT exists to ensure that Colorado has a safe and efficient highway system by building and maintaining interstates, U.S. highways and state highways.

To achieve this, CDOT provides snow and ice operations, roadway maintenance and preservation and construction management. Snow and ice operations includes utilizing a variety of products and techniques for the most effective treatment of snow, slush, ice, and black ice. Products used are differing combinations of sand, sand/salt mixture, and various liquid anti-icers and de-icers based on the storm type and temperatures.



CDOT snow plows at work

CDOT also provides roadway maintenance and preservation services. CDOT maintains, repairs and plows more than 23,000 total lane miles of highway, as well as 3,447 bridges and oversees 28 billion miles of vehicle travel annually.

Another key service CDOT provides is construction management, like on the I-25/Ilex Design-Build project. CDOT oversees the construction contract and verifies the project as being built according to plans and specifications required.

But that's not all, CDOT also provides traffic monitoring, avalanche control, rockfall mitigation, transit development and grants, and traffic safety education for impaired driving, teen driving, distracted driving, work zone safety, seat belts and more.

CDOT also protects the environment, researches cost-effective asphalt applications, develops more efficient and effective deicing procedures, designs and constructs multi-modal facilities, and so much more.

Most importantly, CDOT helps you get to where you need to go, safely in rain, snow or shine as there are no breaks for CDOT maintenance crews-who are often the first to arrive when a car breaks down or when there is an incident on the highway. CDOT also provides traveler information such as trip travel times, construction delays and construction information to help motorists make informed decisions.

What CDOT does not do, however, is maintain local and residential roads, including neighborhood streets. Cities and counties are actually responsible for local and residential roads.

These are only a handful of the many activities CDOT performs to ensure safe and efficient travel on Colorado highways.

Additional Project Information

For more information about the I-25 Ilex Design-Build project, visit the [CDOT website project page](#). To receive future Ilex Design-Build project e-newsletters and construction notices, send an email to i25ilex@PublicInfoTeam.com requesting to be added to the email list.

Colorado Department of Transportation Ilex Project Office,
200 South Santa Fe Avenue, Pueblo, CO 81003

[SafeUnsubscribe™ {recipient's email}](#)

[Forward this email](#) | [Update Profile](#) | [About our service provider](#)

Sent by michelle@bachmanpr.com in collaboration with



Try it free today